

Navigating justice claims in the energy transition

Graphic illustrations of three fictional cases



LUND
UNIVERSITY

Developed by: Eric Brandstedt, Vasna Ramasar,
Henner Busch, Ellen Lycke, Tara Nair van Ryneveld & Saskia Gullstrand

Hosted by: Lund University

Illustrated by: Saskia Gullstrand

Funded by: the Swedish Energy Agency, project number 48693-1

To cite this document: Brandstedt, E., Busch, H., Gullstrand, S., Lycke, E., Ramasar, V. & van Ryneveld, T. N. (2022). *Navigating Justice Claims in the Energy Transition*. Just Energy Transition Project (JET), Lund University, Lund.

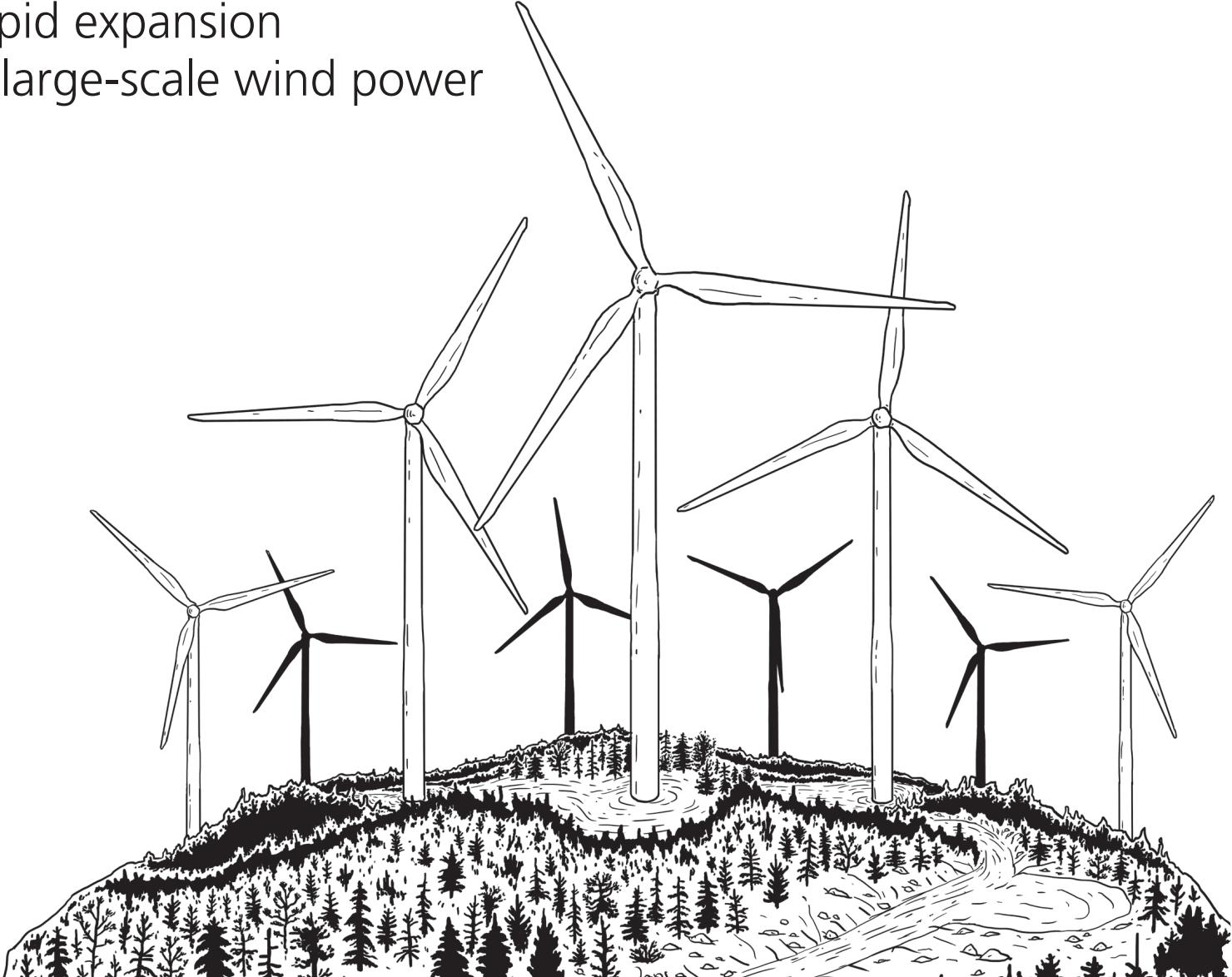
In the interdisciplinary research project, Just Energy Transitions (JET), we aim to contribute to a fair transition to a fossil-free welfare state in Sweden. More specifically, we focus on the complaints that are raised against climate policies. Despite the fact that most people agree that an energy transition is necessary, some will resist specific policies. The resistance is often based on differing justice claims.

To visualize these justice claims within the Swedish energy transition, we developed three fictional cases:

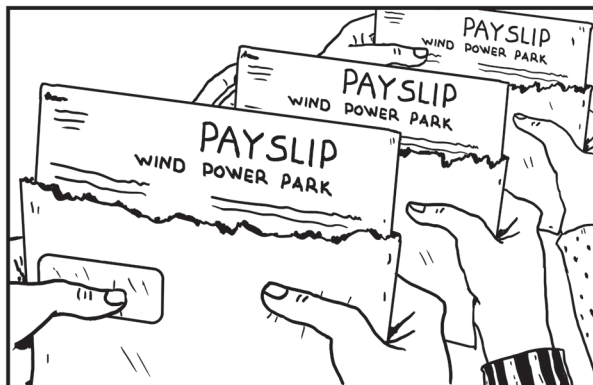
- Rapid expansion of large-scale wind power
- Ban on fossil fuel cars
- Investment in a cleaner oil refinery

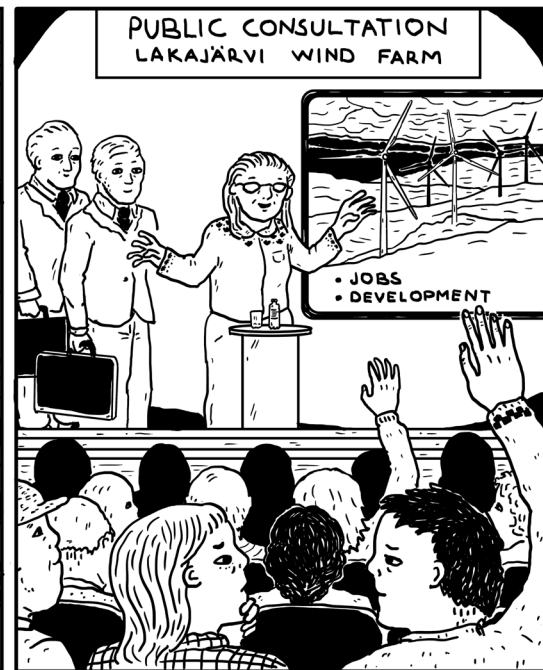
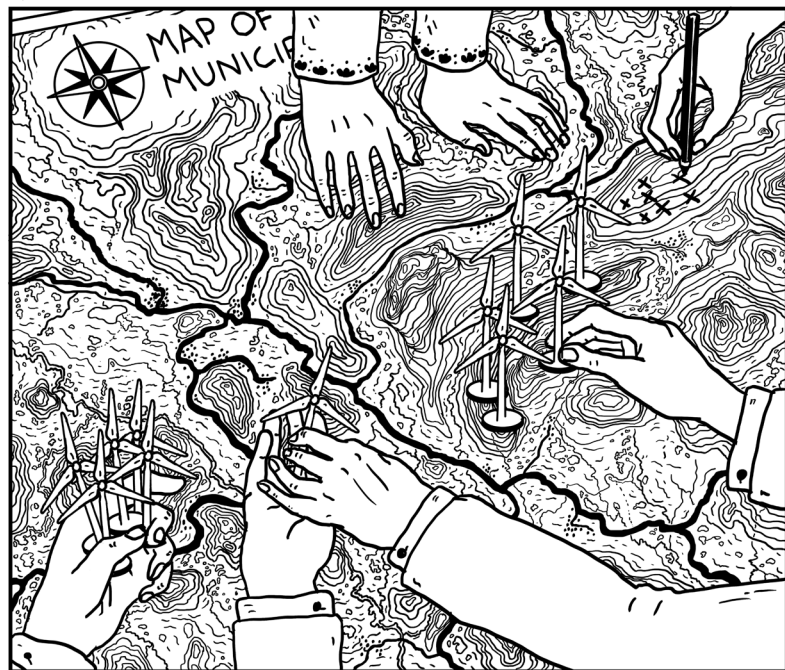
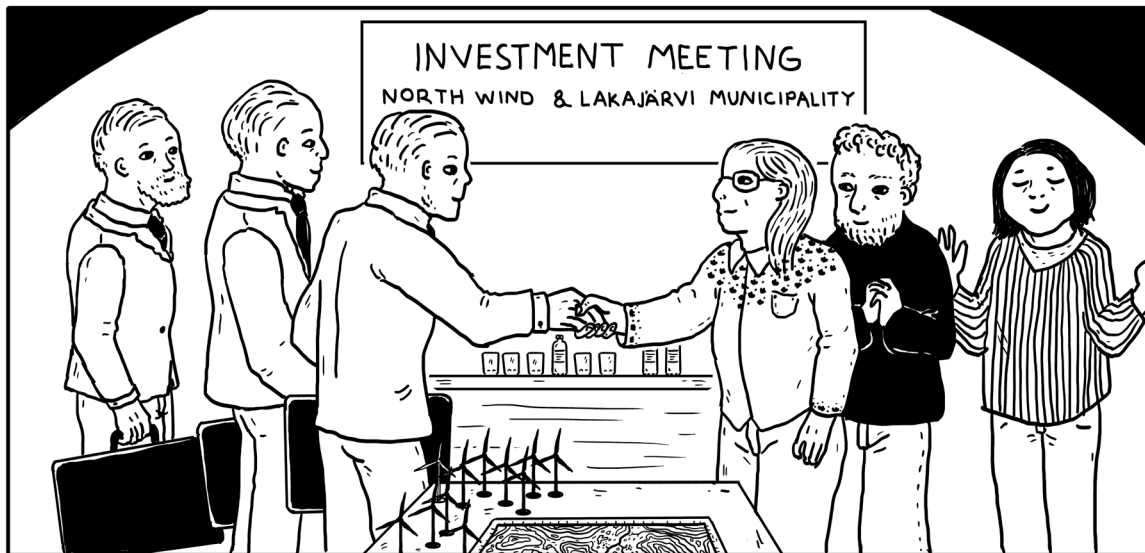
Through a close collaboration with an artist, the cases were transformed into graphic narratives that show points of tension associated with each case. The three illustrated cases are presented in this booklet.

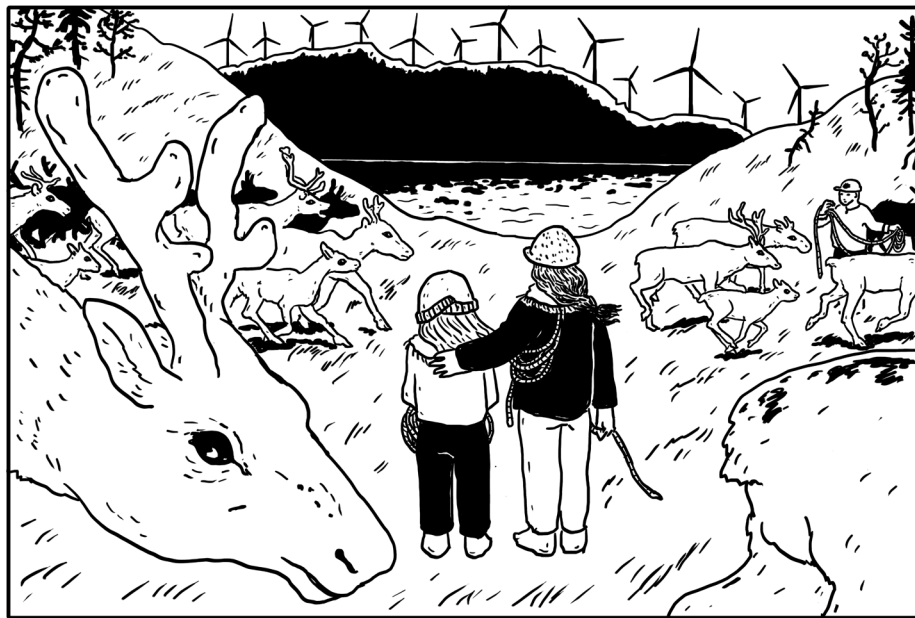
Rapid expansion
of large-scale wind power



Policies in support of renewable energy development have led to a boom of wind power projects in the North of Sweden. The small town of Lakajärvi in Norrbotten County offers ideal conditions for wind power. A Norwegian project developer has approached the municipality with plans to establish a new wind park west of the town. The turbines would increase Sweden's renewable energy capacity by around 3%. The plans are welcomed by some and criticized by others.

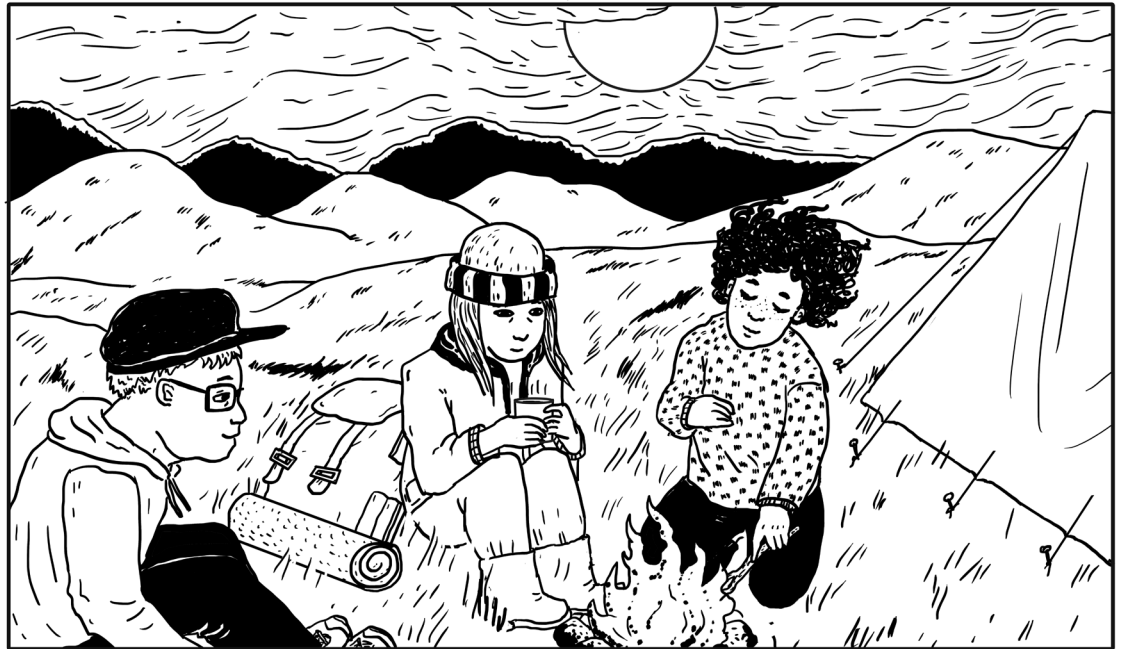
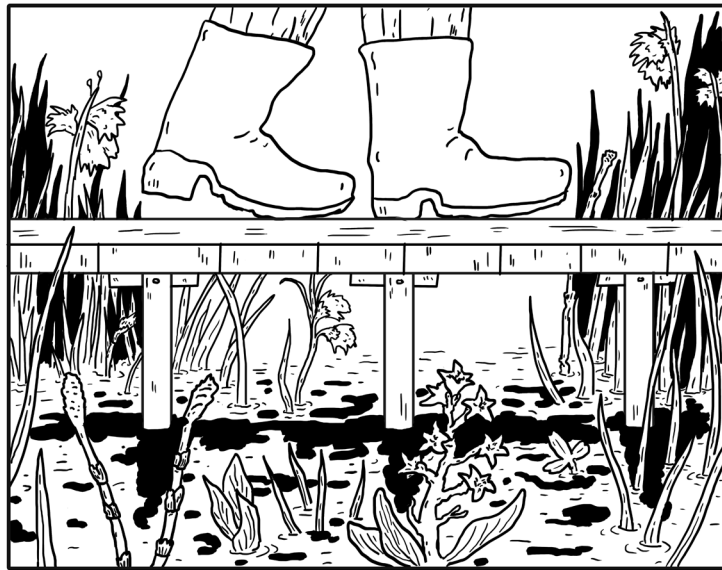


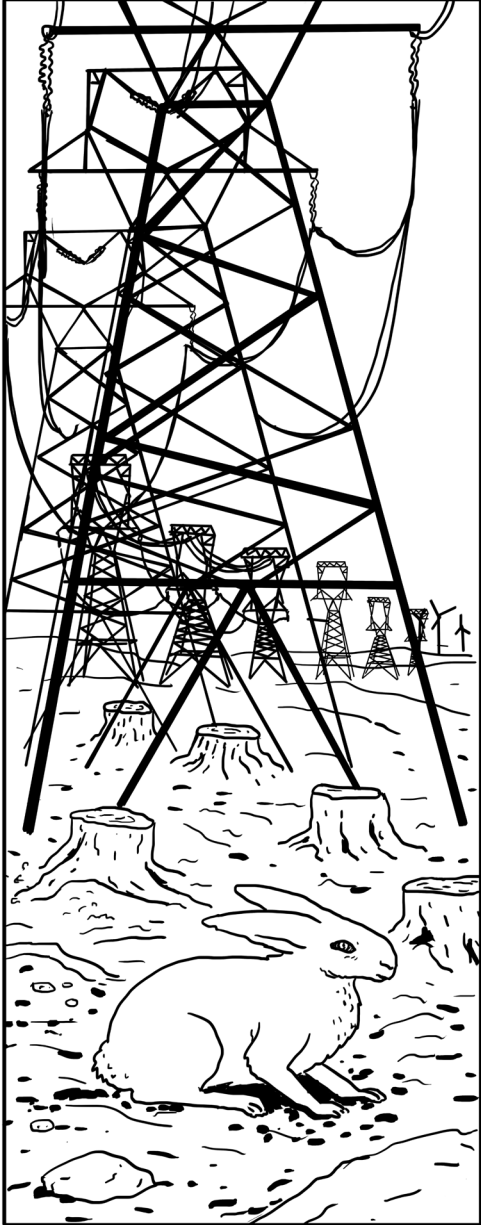
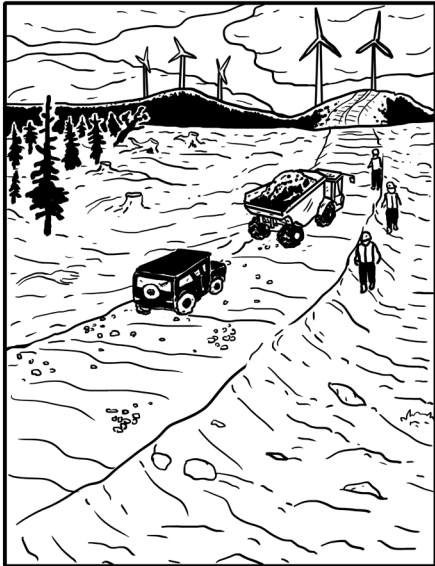


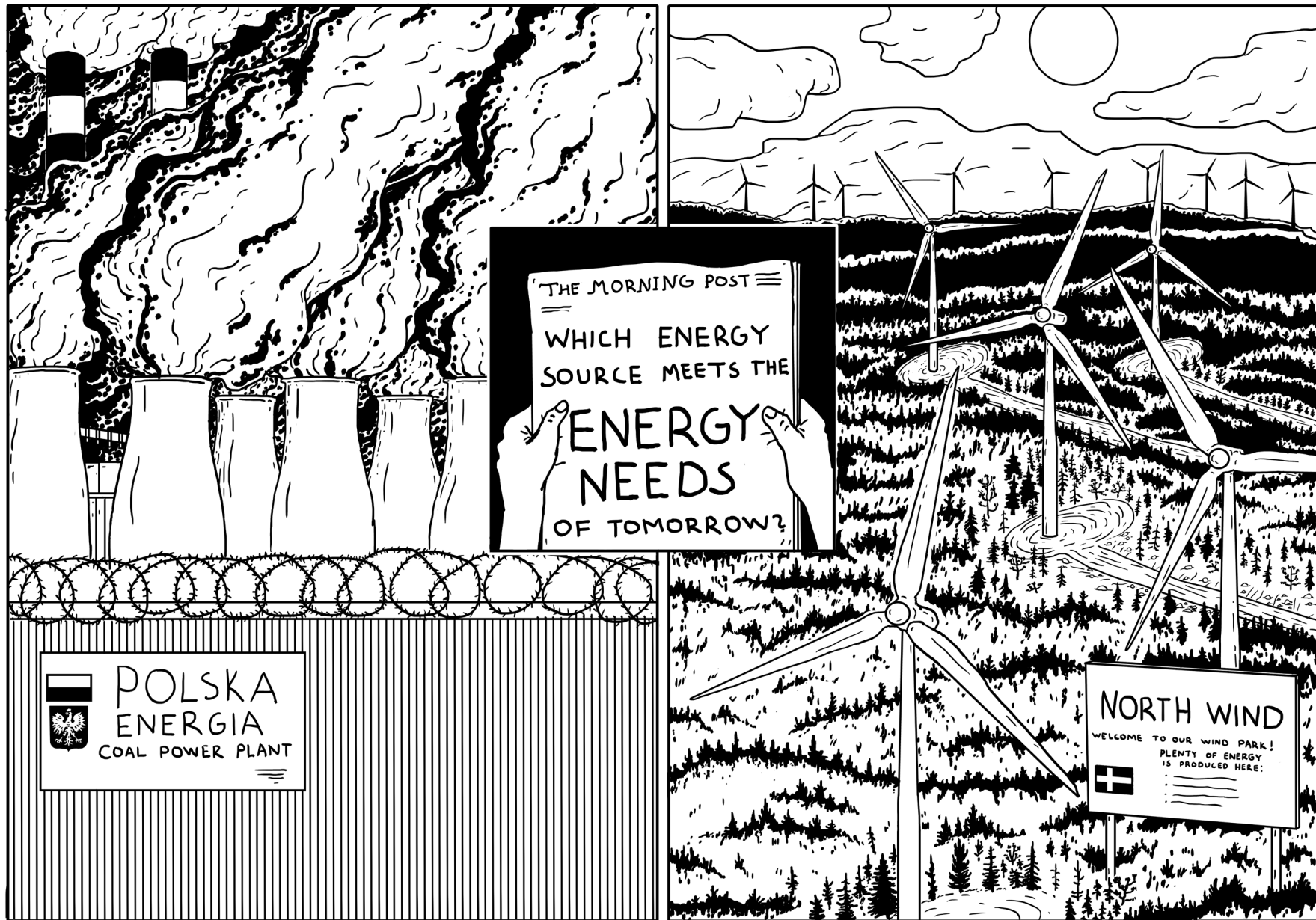


SWEDISH COLONISATION 19TH AND 20TH CENTURY	OF SÁPMI 21ST CENTURY
<ul style="list-style-type: none"> EXTENSIVE LAND GRAB FORCED RELOCATION RACIAL BIOLOGY & GRAVE LOOTING INDUSTRIALIZATION, HYDROPOWER & MINES 	<ul style="list-style-type: none"> "GREEN" COLONIALISM: LARGE-SCALE WIND POWER MINES CLIMATE CHANGE RACISM & DISCRIMINATION







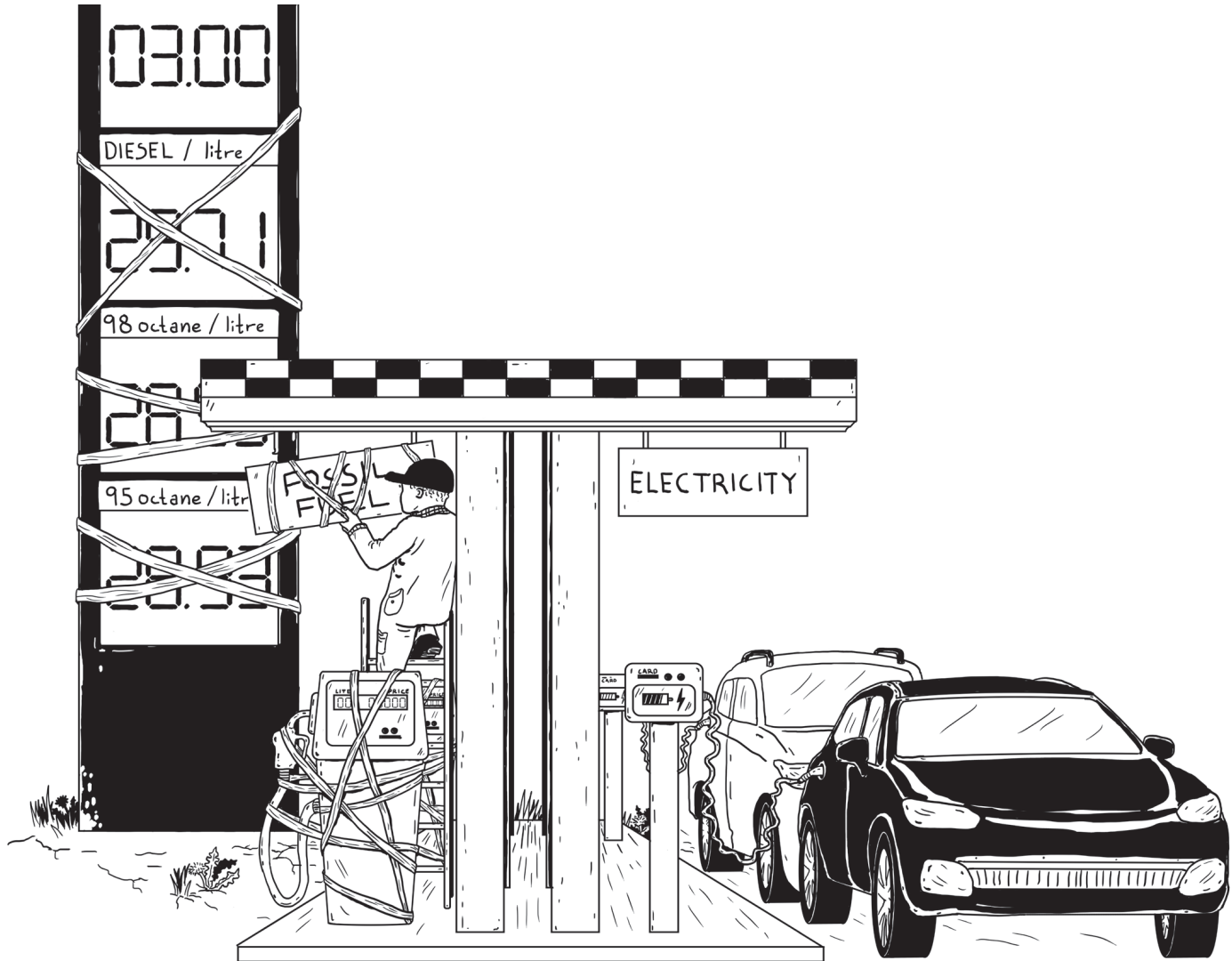


 POLSKA
ENERGIA
COAL POWER PLANT

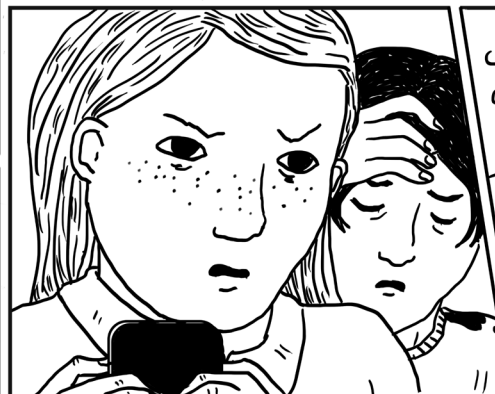
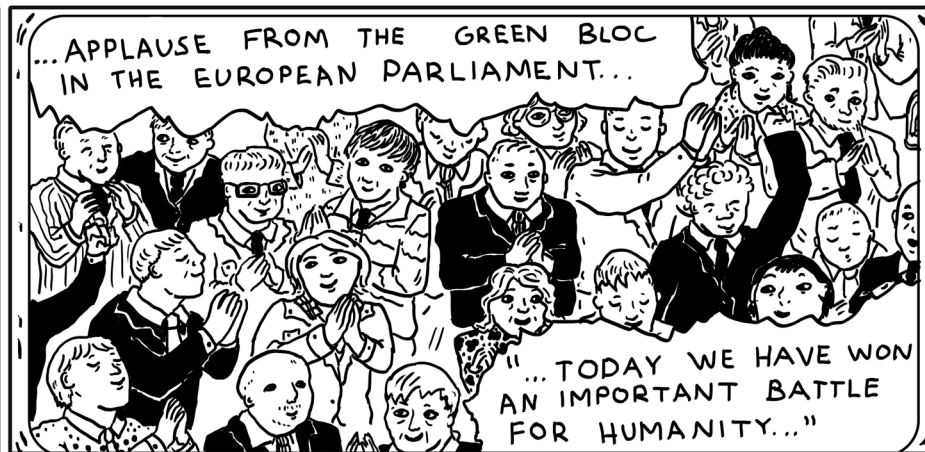
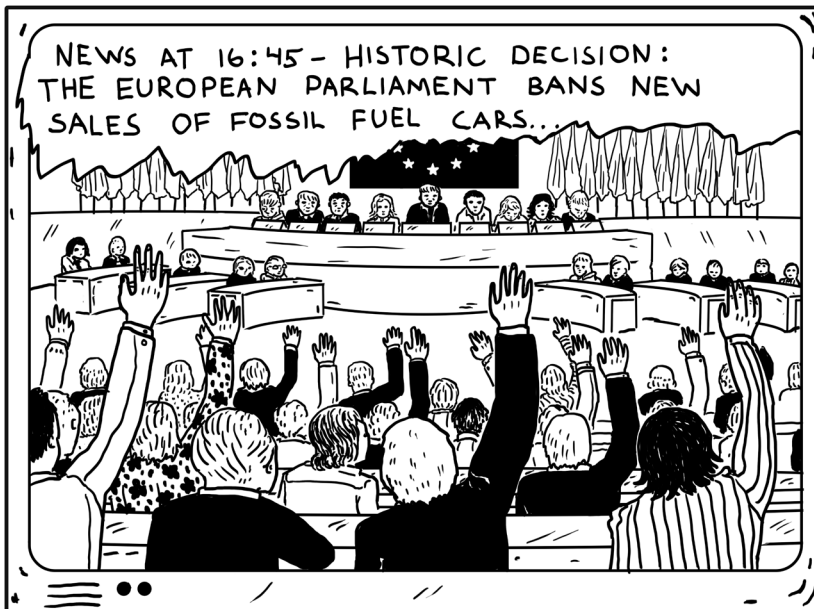
THE MORNING POST
WHICH ENERGY
SOURCE MEETS THE
ENERGY
NEEDS
OF TOMORROW?

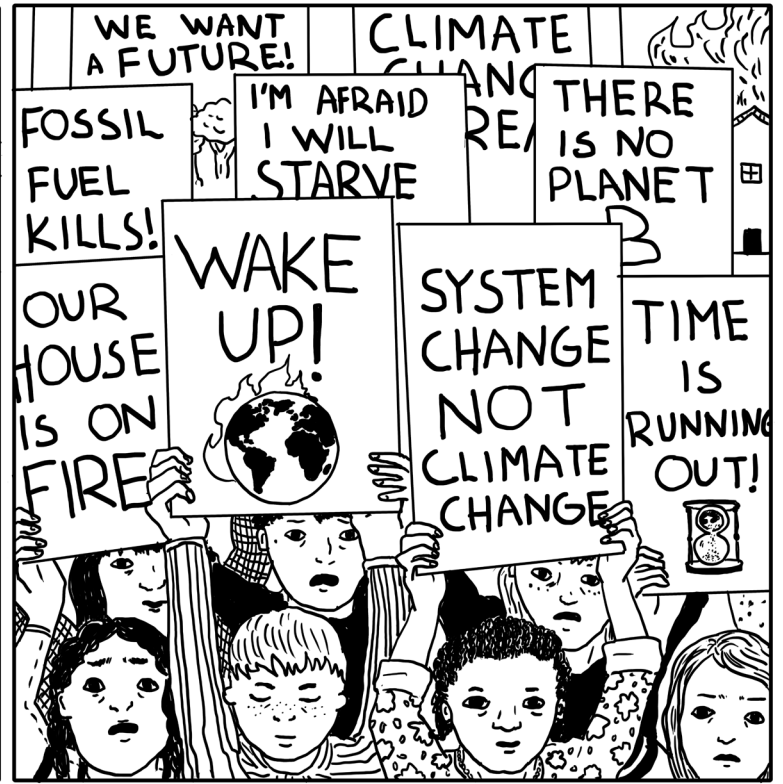
NORTH WIND
WELCOME TO OUR WIND PARK!
PLENTY OF ENERGY
IS PRODUCED HERE:

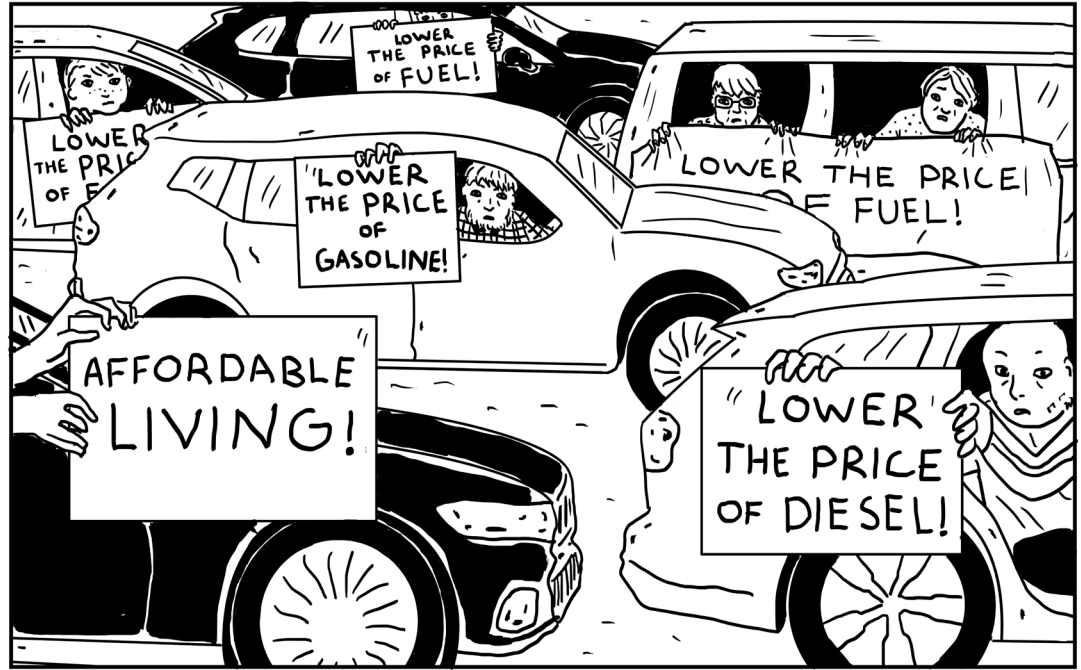
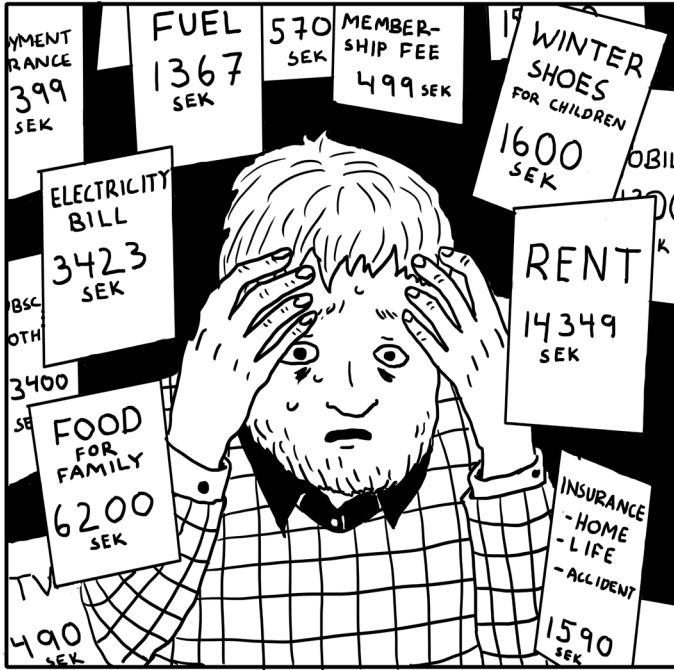
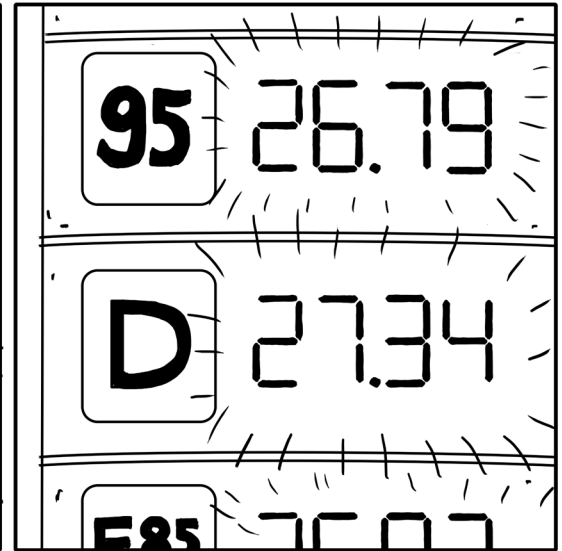
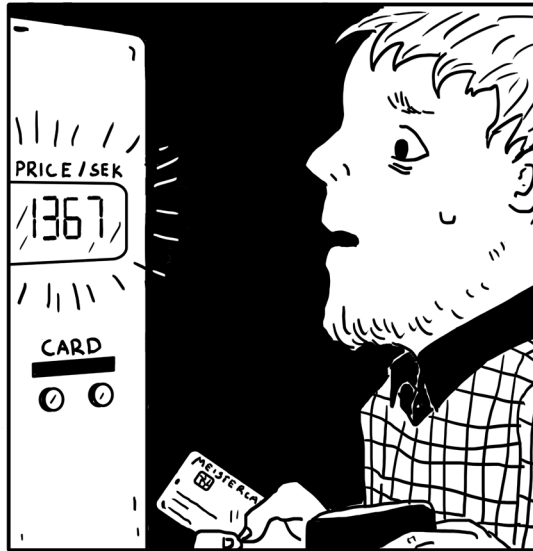
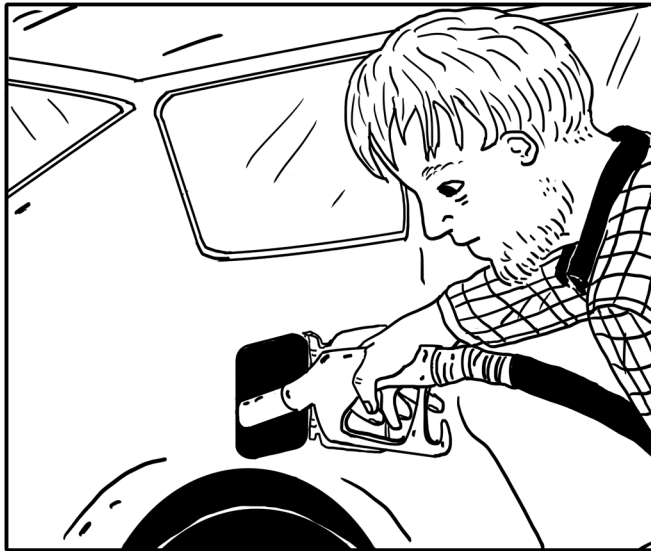

Ban on fossil fuel cars

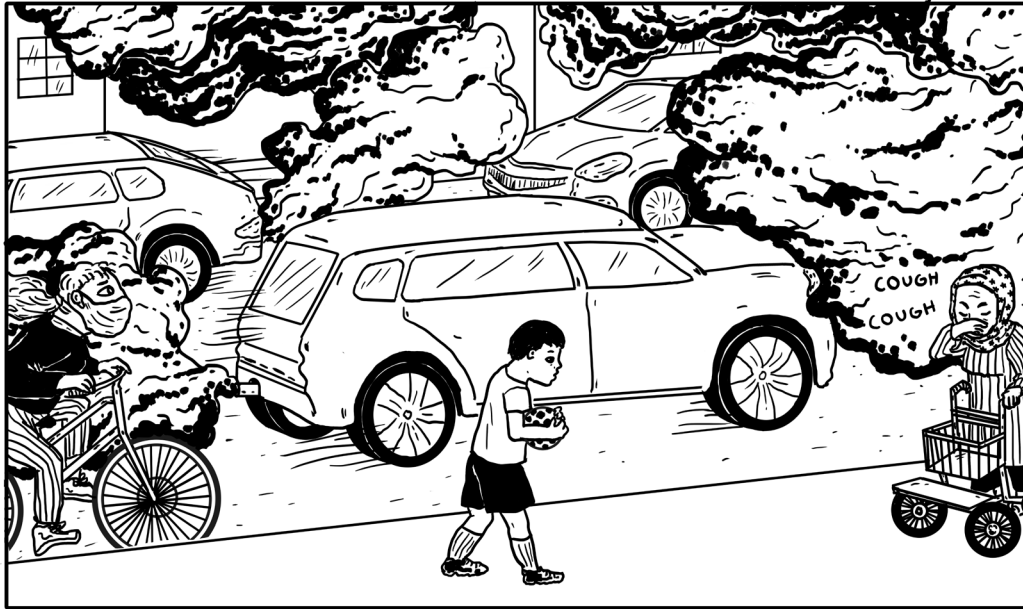


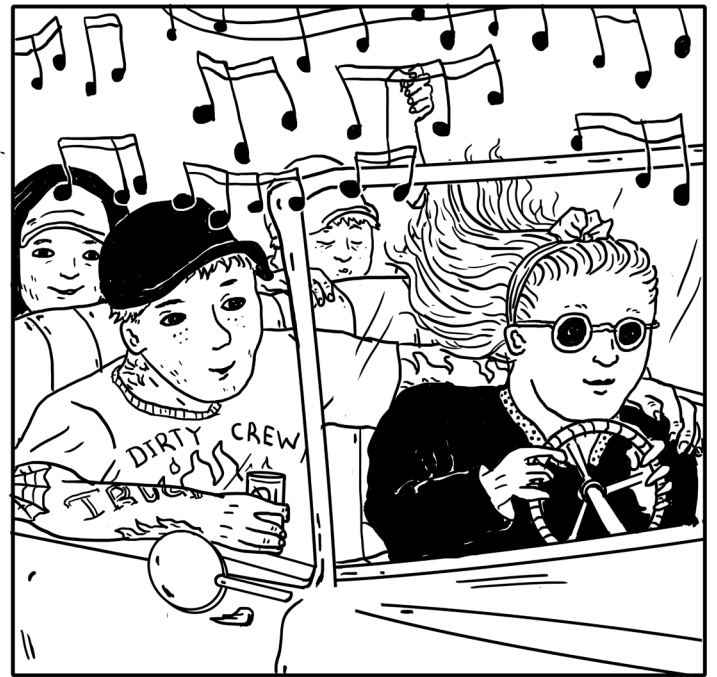
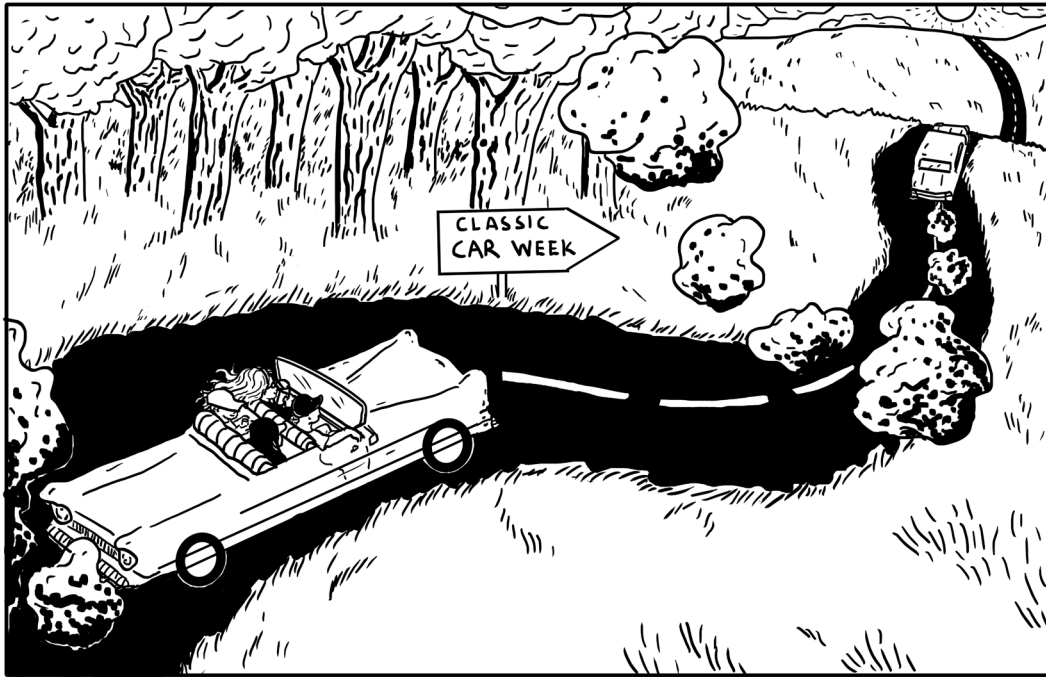
The Swedish parliament has passed a stop date for new sales of fossil fuel cars. As of the 1st of January 2030, car dealers will not be allowed to sell new fossil fuel cars. The aim of the policy is to decarbonise the transport sector primarily through electrification but also through use of biofuels. Some people are less convinced than others that the ban is the right way to go.







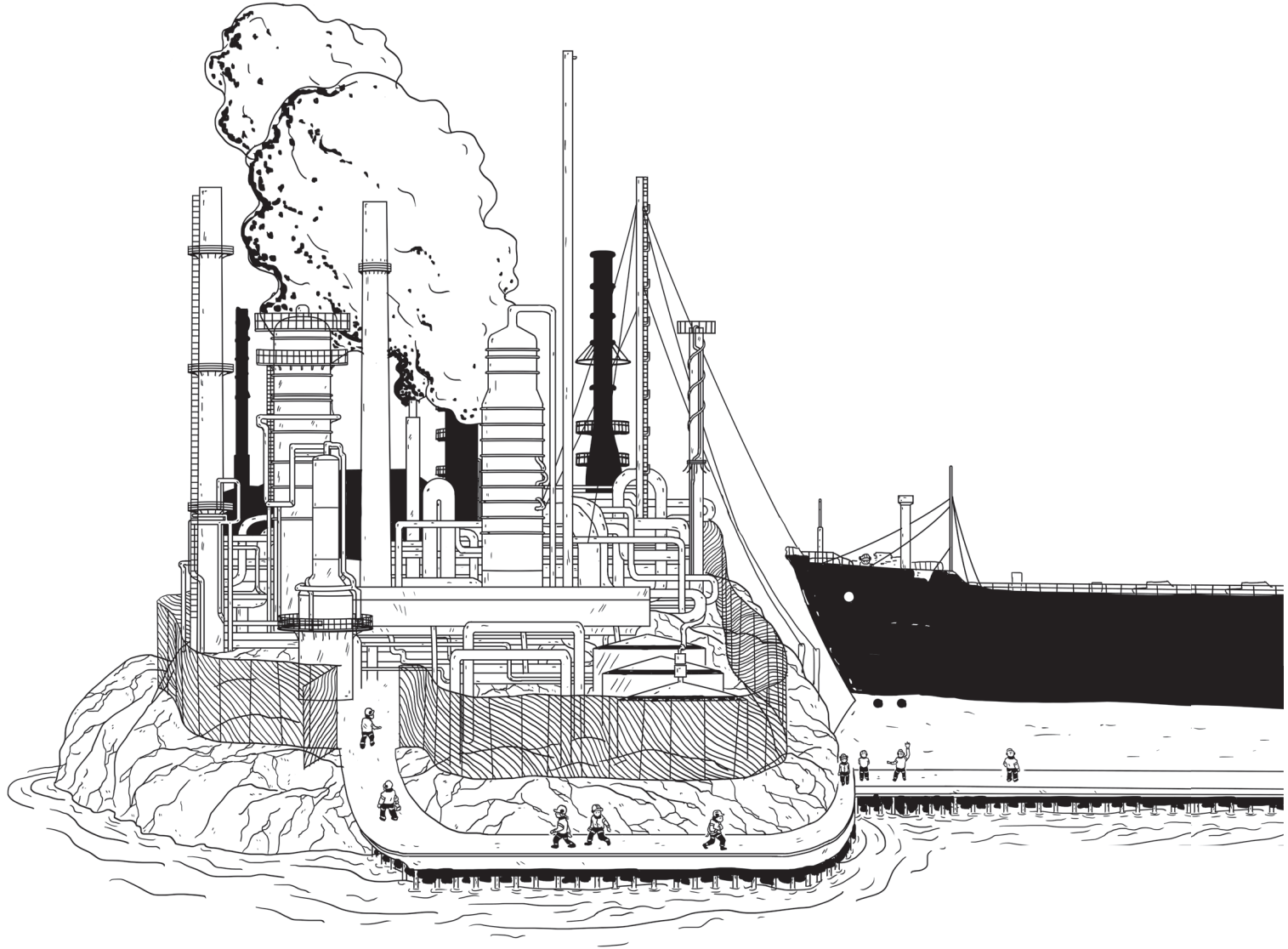




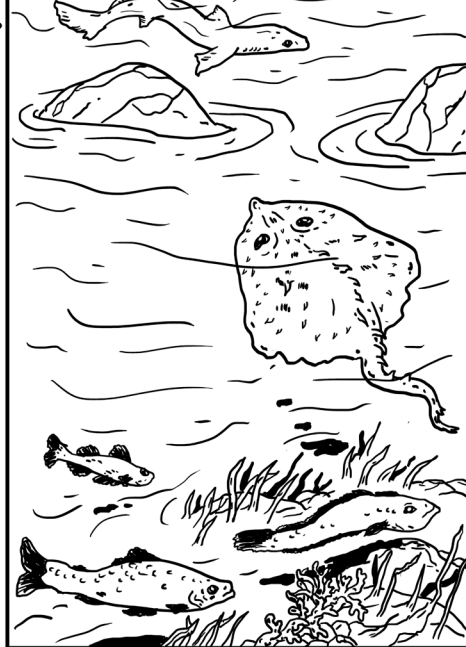
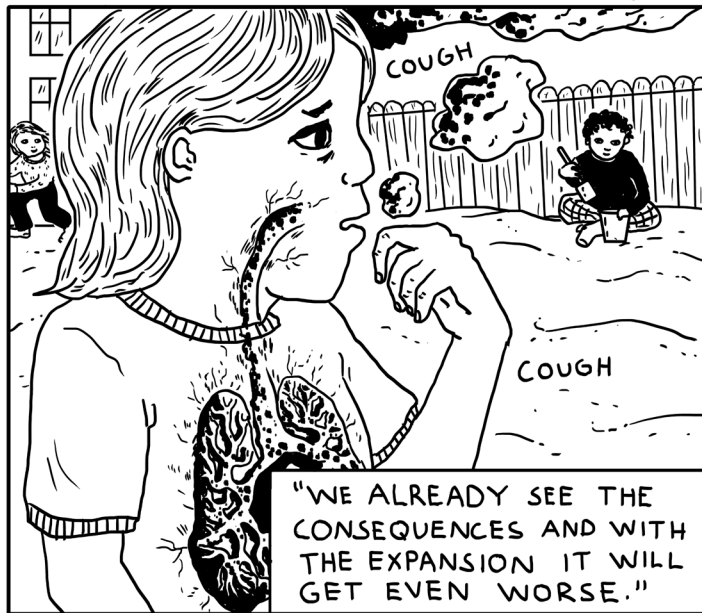
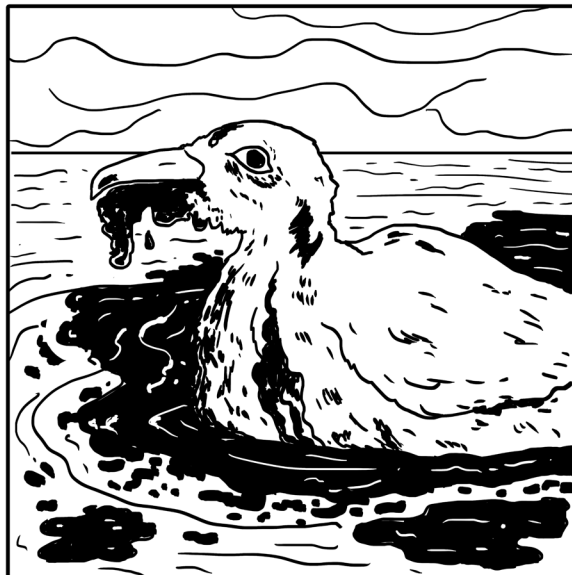
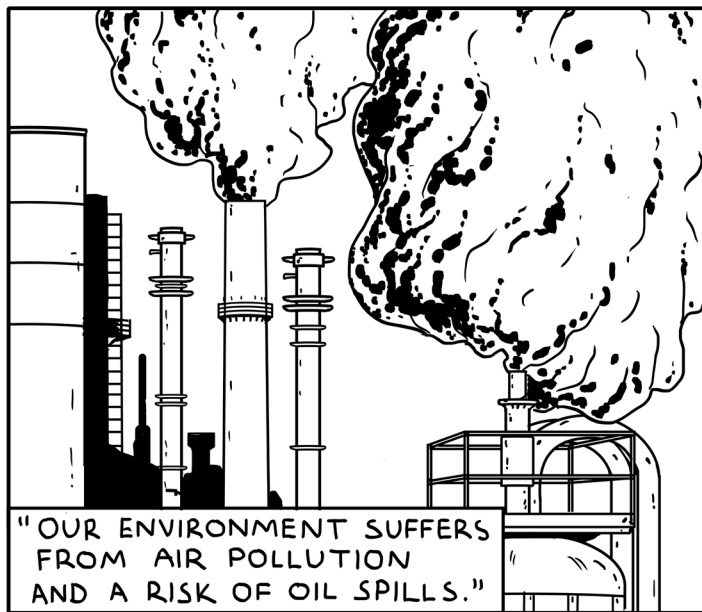




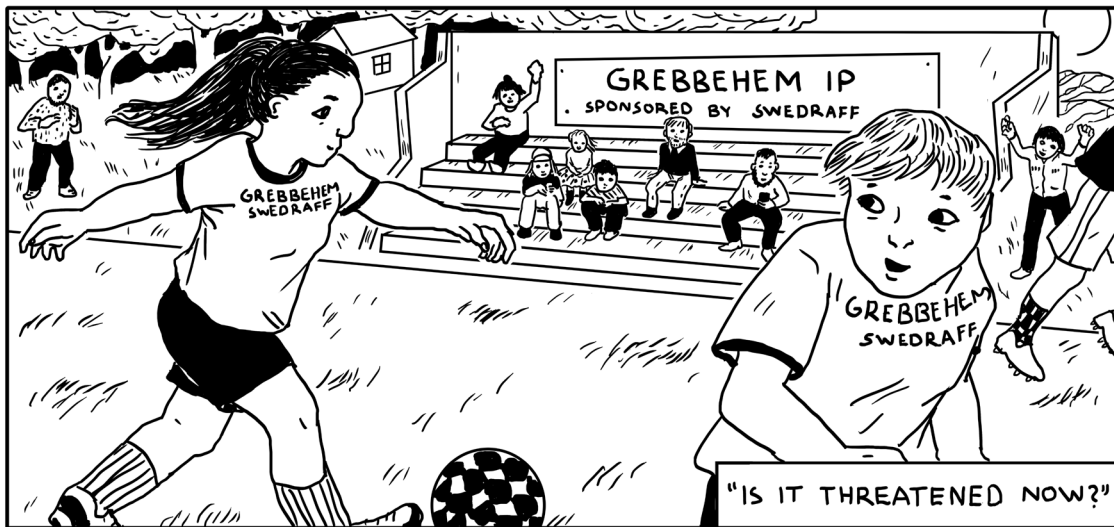
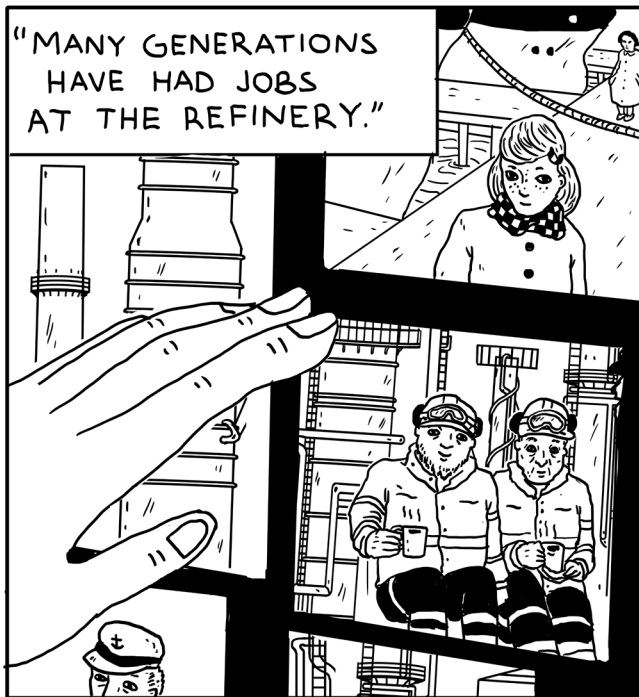
Investment in a cleaner oil refinery

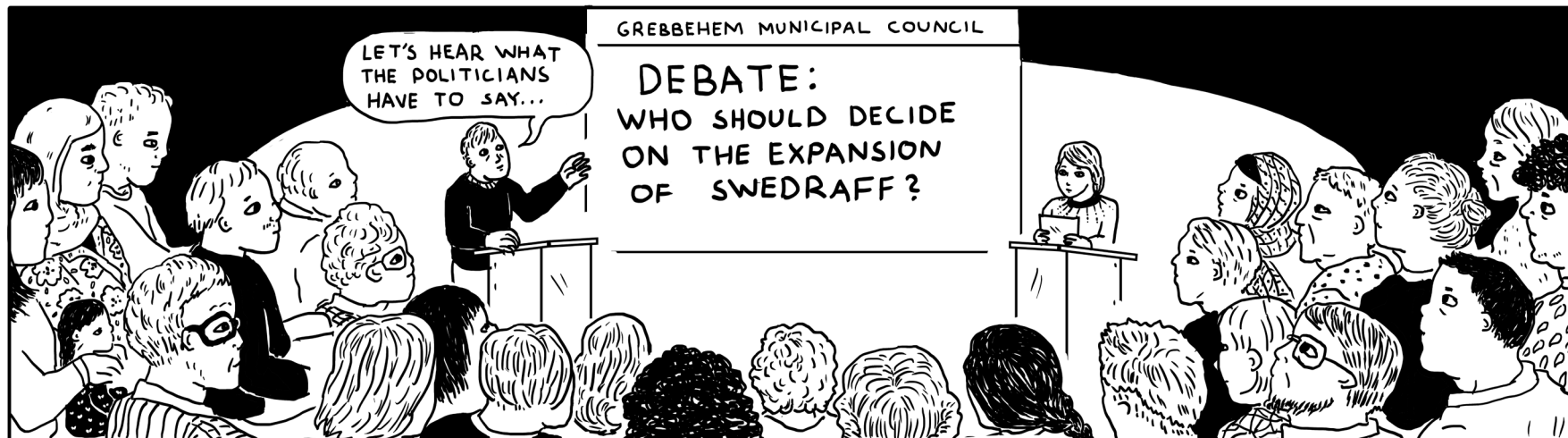


The Swedraff oil refinery has been operational at Grebbehem, on the west coast of Sweden, since the 1970s. It is currently one of the biggest oil refineries in the Nordic region, now planning to expand with a residue oil conversion complex to produce ultra low-sulphur products. The expansion is carried out in order to refine heavy fuel oil, a residual product originating in the production of petrol and diesel. The expansion is giving rise to both hopes and concerns among the population of Grebbehem and other stakeholders.







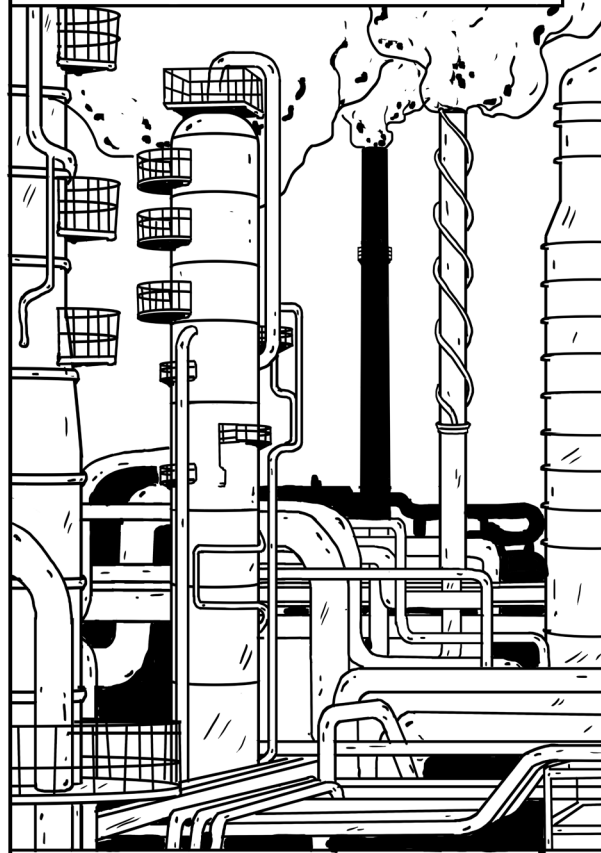


DIFFERENT VIEWS EXPRESSED AT THE LOCAL PARLIAMENT:

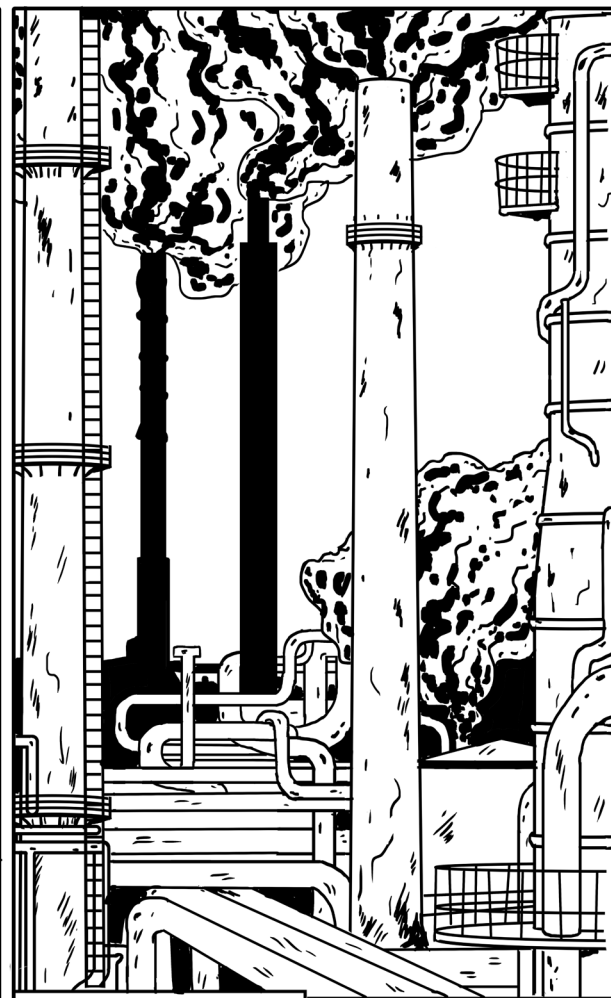




"SWEDRAFF IS ONE OF EUROPE'S
 NEWEST AND CLEANEST REFINERIES
 WITH MUCH LOWER EMISSIONS
 THAN OTHER REFINERIES."

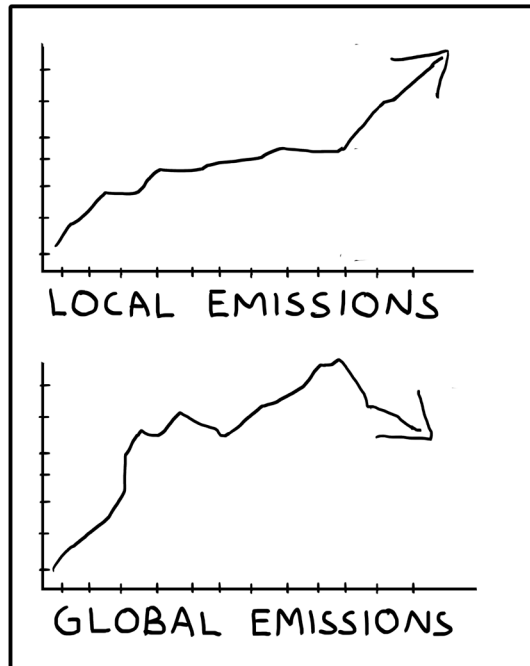


SWEDRAFF
 GREBBEHEM

"PROCESSING AT
 REFINERIES
 ELSEWHERE
 WILL BE WORSE
 FOR THE CLIMATE!"

CAVALLA
 REFINERÍA



LUND
UNIVERSITY

